






Scheda tecnica indumento/Garment technical data sheet. 8881B.00

Identificazione articolo/Item identification					
Cod. comm.le Industrial Starter/ IS commercial item code:	8881B	Cod. art. fornitore/ Supplier item code*:	SK21	Cod. fornitore/ Supplier code:	012520
Cod. colore Industrial Starter/ Industrial Starter colour code:	040 (blu/blue) 080 (grigio/grey)	<input checked="" type="checkbox"/> [X]	Articolo del catalogo/Item from catalogue		
		<input type="checkbox"/> []	Articolo personalizzato/Customized item		
		Codice cliente/Customer code:		N/A	
Nome articolo/Item name:	Giubbino "REVENGE" / "REVENGE" jacket				

Descrizione tecnica dell'articolo/Technical item description			
	Composizione/ Fabric composition	Colore/colour (Pantone)	Peso del tessuto/ Fabric weight [g/m ²]
Tessuto esterno principale / Main outer shell :	100% poliestere "bodkin fleece" / 100% polyester " bodkin fleece"	Blu-Grigio chiaro / Blue-Light Grey	270 +/- 5%
Tessuto esterno contrasto 1 / Contrast 1 outer shell :	100% poliestere "bodkin fleece" / 100% polyester " bodkin fleece"	Grigio Scuro / Dark Grey	270 +/- 5%
Tessuto esterno contrasto 2 anti abrasione/ Anti abrasion contrast 2 outer shell :	97% poliestere 3% spandex accoppiato mesh / 97% polyester 3% spandex bonded mesh	Nero / Black	270 +/- 5%
Fodera tasche / Pocket Lining :	100% poliestere " bodkin fleece" / 100% polyester	Blu-Grigio chiaro / Blue-Light Grey	270 +/- 5%
	210T taffeta / 210T taffeta	Nero / Black	55 +/- 5%
Accessori/Accessories:	n. 2 tasche frontali, n.1 tasca porta documenti, n.2 tasconi interni / n. 2 front pockets, n.1 document pocket, n.2 inner pockets		
Loghi e ricami/ Logos & embroideries:	 		
Taglie/Sizes:	S, M, L, XL, XXL, XXXL, 4XL, 5XL		
Imballo/Packages:	n. 1 pz per paper box – n. 6 pz per cartone / n. 1 piece per paper box - n. 6 pcs per export carton		
Istruzioni lavaggio/ Care label:			

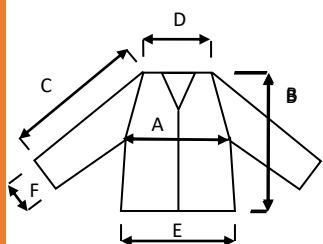
Conformità alle norme CE/Conformity with EC standards		
Cat.DPI/ PPE Category:	I	Norme CE e livelli di protezione/ EC standards and protection levels: EN ISO 13688:2013 (Rif. Test Report RdP no: 19RT01113 by RITEX *) *Accredia Lab n. 0315 L
Lingue nota Informativa/ Manufacturer's notes languages:	IT,ES,CZ,PL,EN,PT,SK,HU,FR,DE,LT,RS,GR,SI,LV,HR,EE,TR,RO	



Scheda tecnica indumento/Garment technical data sheet. 8881B.00

	Misure delle taglie/Size measurements [cm]							
	S	M	L	XL	XXL	XXXL	4XL	5XL
A. Torace / Chest:	104	110	116	122	128	134	140	146
B. Lunghezza tot. / Tot. lenght:	68	60	72	74	76	78	80	82
C. Manica / Sleeve :	79	81	83	85	87	89	91	92
D. Spalle / Shoulder :	41	43,5	46	48,5	51	53,5	56	58,5
E. Fondo / Bottom:	48	51	54	57	60	63	66	69
F. Polsino / Sleeve opening :	10	11	11	12	12	13	13	14

Disegno e foto/Drawing and photo



8881D "REVENGE" al "CUBO" / 8881D "REVENGE" "CUBE"



n. 6 box assortiti / n. 6 assorted boxes : M/1, L/2, XL/2, XXL/1

Altavilla Vic.na (Vi), 10/05/2021